

# EVOX PROOF

CERTIFIED SELF-LOADING STRETCHER  
CONVERTIBLE INTO CHAIR

Infinite  
position  
adjustments



AIS125  
certified

Art. 7112I PROOF

## EVOX PROOF

"EVOX" certified self-loading stretcher convertible into chair complete with mattress

The self-loading stretcher EVOX enables to settle the patient with the most comfortable position for its rescue and transport. Its conversion into chair allows access in all those confined spaces, such as elevators and hallways with tight corners, where a common stretcher cannot easily be manoeuvred. A gas pistons system allows to adjust EVOX in infinite positions until reaching the sitting position, relieving the operator from any sort of effort. Frame in stainless steel electro-polished, polyurethane wheels Ø 200mm, safety command to prevent accidental closure, mattress divided into four separate sections and an attractive design are the ultimate features of this device, always more required by the

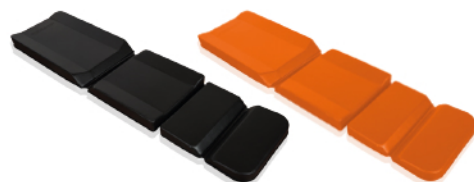
markets. An innovative system, consisting of four "balancing" loading wheels, allows to load Evox on different stretcher supports. Thanks to the appropriate lock in conjunction with the fixing system art. 962, **the stretcher chair EVOX art. 7112I PROOF is able to withstand shocks up to 10G in all directions, as regulated by the UNI EN 1789 norm.** The ability to accommodate patient in the most congenial position, makes Evox the ideal solution also for all the emergency waiting rooms.

**Supplied with No. 1 mattress art. 7009/A or 7009/N and No. 2 belts art. 608-A/MEB or 608-N/MEB.**





Supplied with (\*)



Art. 7009/N - Art. 7009/A

Orange/Black electro-welded mattress for self-loading stretcher EVOX



Art. 608-A/MEB - Art. 608-N/MEB

Orange or black 2 pieces belt with metallic buckle and MeBer ribbon (l. 155 cm)

(\*) Supplied with no. 1 mattress and no.2 belts to choose among available colours



Chair without mattress

Art.	Colour	Material	Height	Max loading height	Folded height	Width	Length	Folded length	Chair position min length	Weight	Loading capacity
71121 PROOF		Stainless steel	80 cm	67 cm	27 cm	60 cm	193 cm	198 cm	123 cm	44,5 kg	220 kg

Accessories



Art. 12016E

Telescopic folding IV pole for stretcher EVOX Proof self-loading chair

NEW  
PRODUCT



Art. 12100/N

Black electro-welded shaped cushion with MeBer logo for electro-welded mattress



Art. 962

EN 1789 certified fixing system for self-loading stretcher/chair EVOX Proof