



19300 DynaStep

1120 mm mechanical step DynaStep



FEATURES

DynaStep is the new range of automated mechanical steps manufactured by Me.Ber. The range includes two models, with width ranging from 800 to 1120 mm, both made in high quality materials such as aluminium, steel (for moving and support sections) and high-resistance plastic polymers. The total loading capacity amounts to 300 kg, making the steps suitable for bariatric patients. The DynaStep range may be installed on any commercial vehicle provided with side doors, thanks to specific mounting kits that are available as an optional accessory. Four strips of non-slip material ensure safe support even in the presence of water and mud.

Opening the step mechanically is dependent on the opening of the side door of the vehicle. This solution is fairly convenient as it prevents inadvertent closing or opening of the step, as well as not relying on electronic devices. The thickness, identical on the two models, amounts to 65mm and is amongst the slimmest in circulation. This feature ensures that the step is opened in all safety even in the presence of bumps, humps and/or sudden slope changes on the road surface. The graphic elements on the devices are reflective, which contributes to making the step highly visible at night or in event of poor visibility.

Platform: Aluminium

Pins and rotation elements: Stainless steel

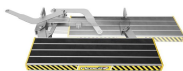
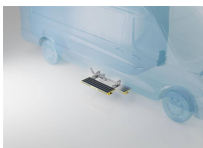
Size: 114 x 26 cm

Thickness: 6,5 cm

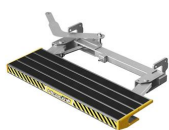
MAIN FEATURES

Length (cm)	114
Width (cm)	26
Thickness (cm)	6,5
Weight (kg)	19,3
Loading capacity (kg)	300

IMAGES



SEE ALSO



DynaStep 19302
800 mm mechanical step
DynaStep

ACCESSORIES



19310
FIAT DUCATO Mounting Kit for
DynaStep mechanical steps



19312
Iveco daily mounting Kit for
"DynaStep" mechanical steps



19314
Mercedes Sprinter e Volkswagen
Crafter mounting Kit for DynaStep
mechanical steps