



631 Maxima

Grey anodized anti trauma scoop stretcher with head/trunk in 1 pc



FEATURES

Scoop stretcher: the difference between this model and art. 630 is that the head and torso areas are united in one piece instead of two. They share the same size.

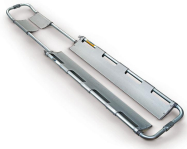


Device certified according to the European harmonized standards UNI EN 1865 - UNI EN 1789

MAIN FEATURES

Size	Adults
Usage	Rescue
Height (cm)	7
Width (cm)	42
Length (cm)	167
Max length (cm)	202
Folded length (cm)	120
Epaisseur pliée (cm)	9
Weight (kg)	9,5
Loading capacity (kg)	170
Type	
10G Certification	
Material	Anodized aluminium

IMAGES



SEE ALSO



Maxima 631/G
Yellow painted anti trauma scoop
stretcher with head/trunk in one
piece



Maxima 630/N
Black painted anti trauma scoop
stretcher



Maxima 630/B
Blue painted anti trauma scoop
stretcher



Maxima 630
Grey anodized anti trauma scoop
stretcher



Maxima 630/A
Orange painted anti trauma scoop
stretcher

ACCESSORIES



616

Certified vertical fastening system
for scoop stretchers



630/CS

Carrying case for scoop stretchers



616/A

Certified vertical fixing system for
scoop stretchers



Double 624

Head immobilizer for scoop
stretcher



614

Certified horizontal fastening
system for scoop stretchers



603/MEB

Nylon bag containing 3 belts Art.
607/Ameb